

Los Angeles Times

City Times

Serving Baldwin Hills, Boyle Heights, Chinatown, Crenshaw, Downtown, East Los Angeles, Echo Park, Koreatown, Little Tokyo, Pico-Union, South-Central Los Angeles, Watts and several Southeast Los Angeles cities

SUNDAY, NOVEMBER 6, 1994

City Times

Voices

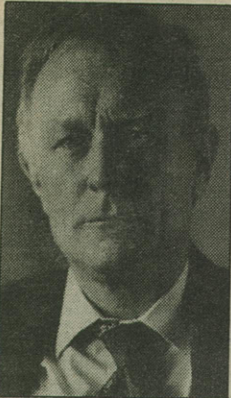
■ Commentary on local issues, viewpoints of residents and community leaders, and letters.

ANSWERS AND DISCUSSION

CHAPTER TWELVE

■ **Shawn Steele**

Attorney, Koreatown



My wife is a Korean immigrant, as is most of her immediate family. I am pro-immigration, and was ambivalent about Proposition 187 until I read it. What I see is a prudent measure that would take public benefits away from people who are here illegally, some of whom cannot and

do not produce something beneficial to society. Immigrants who have waited for years and have overcome economic and political obstacles to come here are being punished.

If we do not choose to take any action, it will be a signal to other people throughout the world who are sick or poor that if you can only drop in here, you will get great medical and educational services without any prohibition. As long as we make it unbelievably inviting, we'll continue to get people coming in. It's one of many reforms we need.

ANSWERS AND DISCUSSION

CHAPTER TWELVE